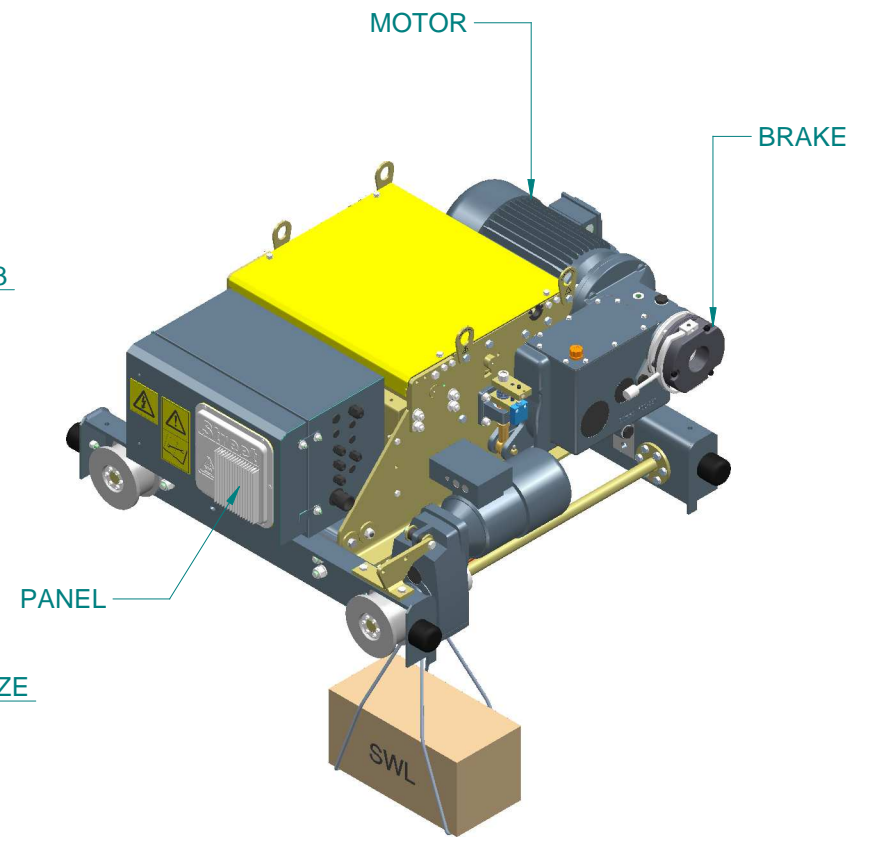
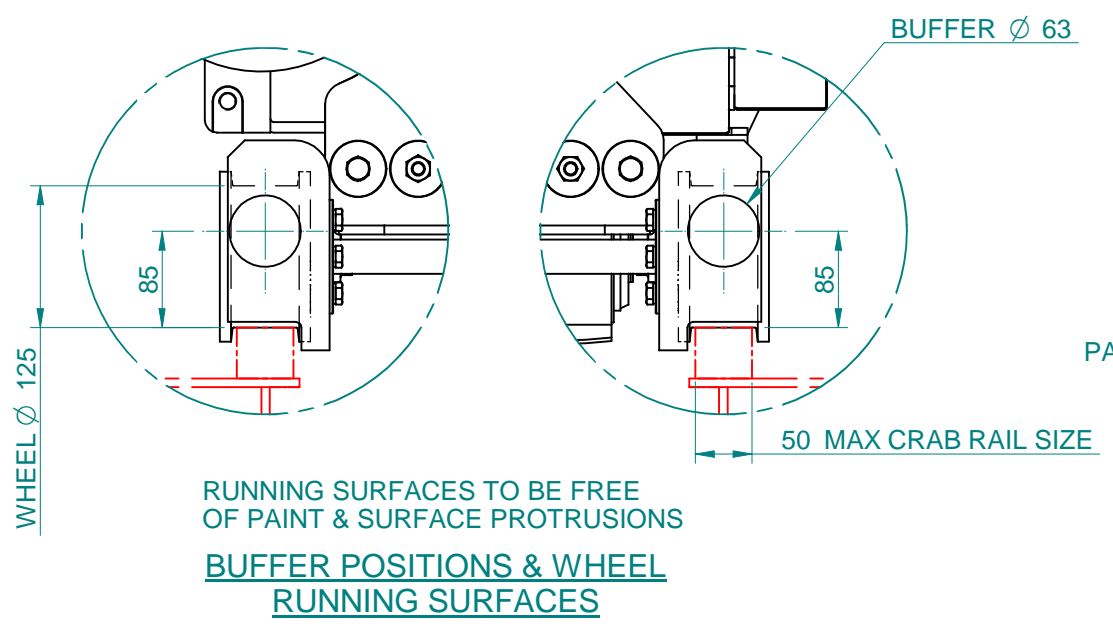
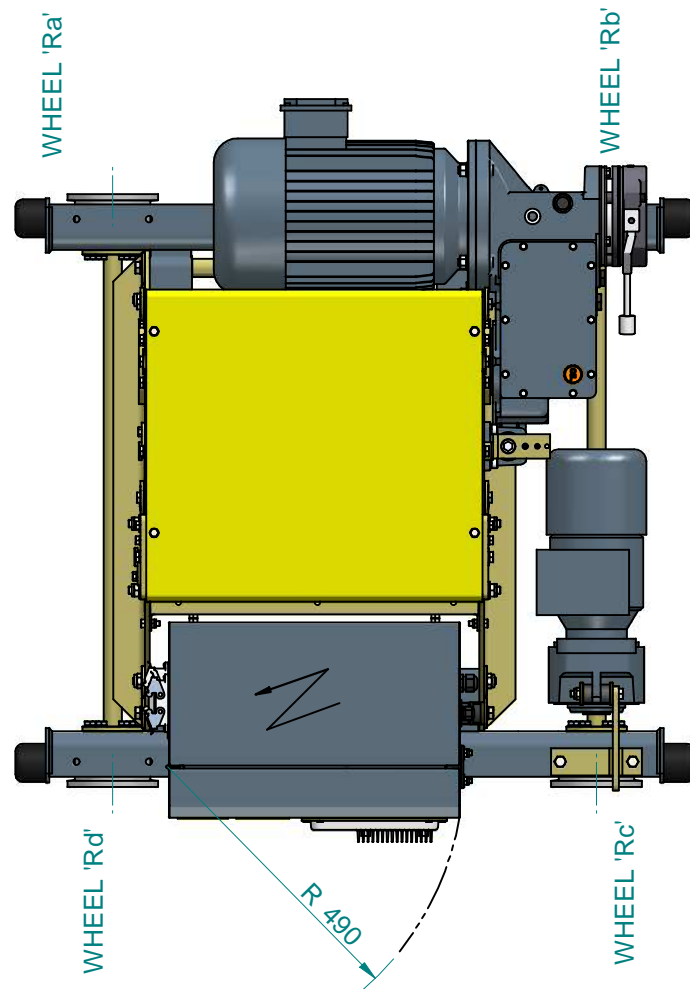
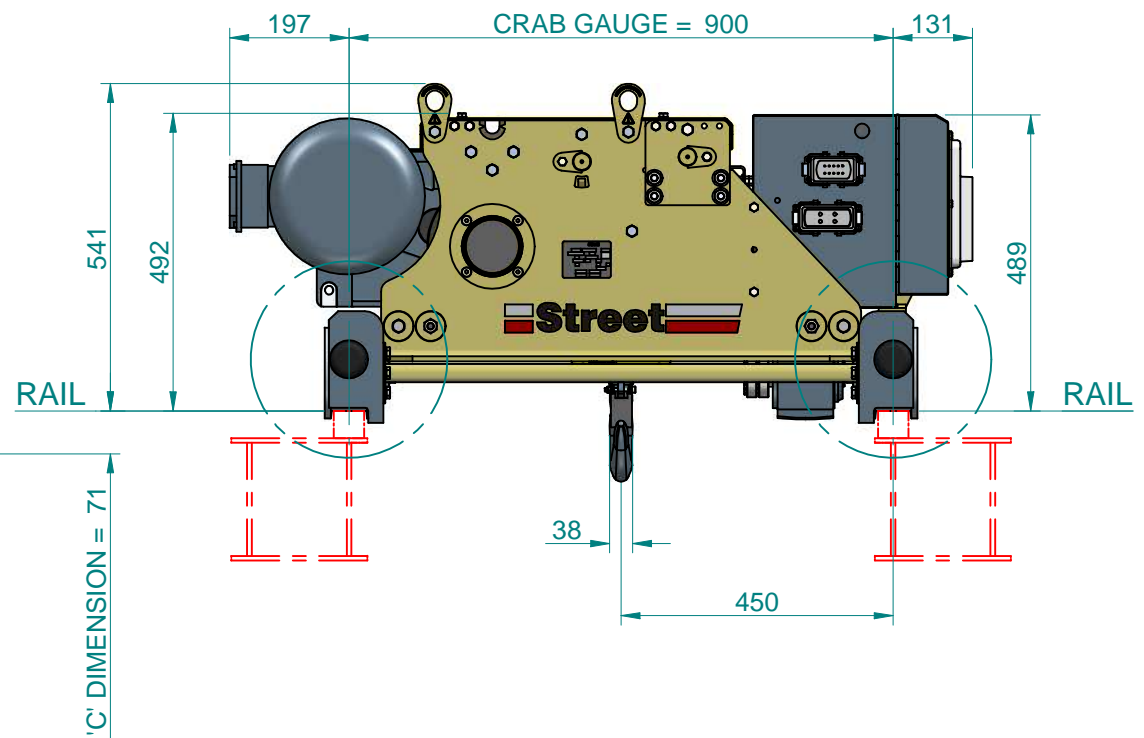
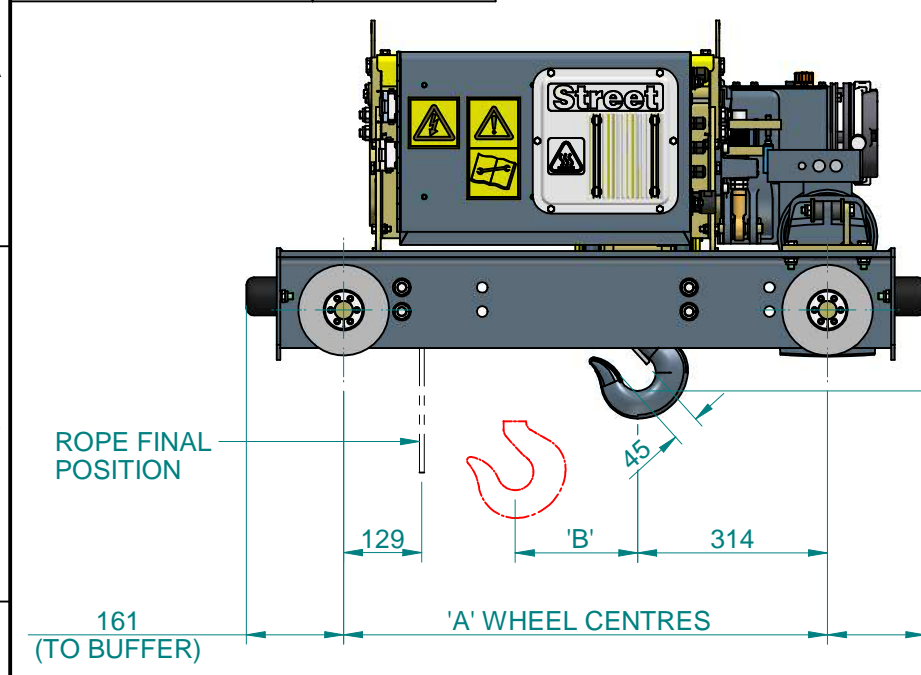
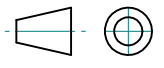


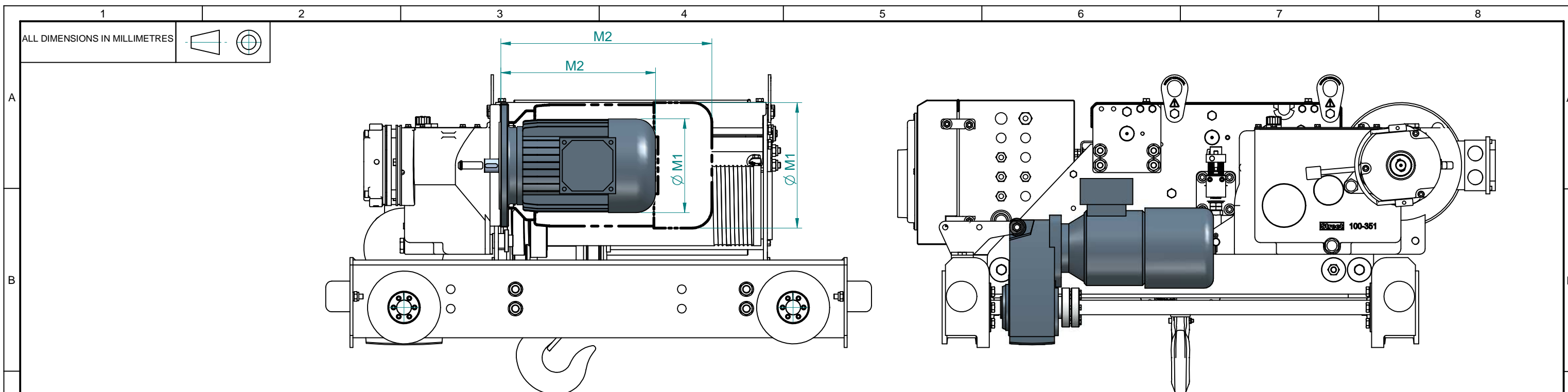
ALL DIMENSIONS IN MILLIMETRES



HOIST MODEL	HEIGHT OF LIFT (m)	WHEEL LOAD in kg (WORST CASE LOAD AT TOP LIMIT) = FACTOR * SWL (in kg) + VALUE IN ()				SWL POSITION FOR MAX WHEEL LOAD	SELF MASS (kg)	DIMENSIONS (mm)	
		Ra	Rb	Rc	Rd			A	B
ZX064-***N	6.5	0.2 * SWL + (120)	0.31 * SWL + (155)	0.31 * SWL + (98)	0.2 * SWL + (75)	TOP	446	800	106
ZX064-***L	10	0.16 * SWL + (128)	0.35 * SWL + (180)	0.35 * SWL + (115)	0.16 * SWL + (82)	TOP	502	1030	163
ZX064-***E	15	0.12 * SWL + (148)	0.39 * SWL + (216)	0.39 * SWL + (139)	0.12 * SWL + (95)	TOP	596	1375	245

REV	C	BLOCK OPERATED ULTIMATE LIMIT OPTION ADDED, WORD 'INVERTER' IN NOTE CHANGED TO 'CONTACTOR CONTROL' ON SHT 3. WHEEL LOAD TABLE UPDATED. REF ECO-00260	SAJID	05/03/2009	Street Crane Co. Ltd				TITLE	CONTRACT No.			
	B	WHEEL LOADS & SELF MASS ADDED, SHEET3 ADDED, NEW ROPE POSITION SHOWN. REF ECO-00152	BPC	09/06/2008	DATE	DRAWN	CHECKED	SCALE	ZX064 PARALLEL CRAB HOIST CE DATA SHEET NORMAL, LONG AND EXTRA LONG BARREL	PART No.	DZX-1019		
		DESCRIPTION	BY	DATE	10/04/2008	SW	CR	NTS		DRAWING No.	3	DZX-1019	C

INFRINGEMENT OF COPYRIGHT. THIS DRAWING IS THE PROPERTY OF STREET CRANE COMPANY LTD AND MUST NOT BE COPIED OR SHOWN TO THIRD PARTIES WITHOUT THE WRITTEN PERMISSION OF STREET CRANE CO LTD, CHAPEL-EN-LE-FRITH, HIGH PEAK, SK23 0PH. U.K . T : +44 (0)1298 812456 F : +44 (0)1298 814945



HOIST CODE	PRICE LIST MOTOR REF	DUTY	POWER kW		DIMENSIONS	
			FAST	SLOW	ØM1	M2
ZX064-3***M3*03*-*****-40050E*4	H3 (CE 40°)	M3	3.7	1.2	193	318
ZX064-3***M4*03*-*****-40050E*4		M4	3.4	1.1		
ZX064-3***M5*03*-*****-40050E*4		M5	3.1	1.0		
ZX064-3***M6*03*-*****-40050E*4		M6	2.8	0.9		
ZX064-3***M7*03*-*****-40050E*4		M7	2.5	0.8		
ZX064-3***M3*03*-*****-40050E*5	H3 (CE 50°)	M3	3.3	1.1	193	318
ZX064-3***M4*03*-*****-40050E*5		M4	3.1	1.0		
ZX064-3***M5*03*-*****-40050E*5		M5	2.8	0.9		
ZX064-3***M6*03*-*****-40050E*5		M6	2.5	0.8		
ZX064-3***M7*03*-*****-40050E*5		M7	2.2	0.7		
ZX064-3***M3*04*-*****-40050E*4	H4 (CE 40°)	M3	4.7	1.6	217	337
ZX064-3***M4*04*-*****-40050E*4		M4	4.3	1.4		
ZX064-3***M5*04*-*****-40050E*4		M5	3.9	1.3		
ZX064-3***M6*04*-*****-40050E*4		M6	3.5	1.2		
ZX064-3***M7*04*-*****-40050E*4		M7	3.1	1.0		
ZX064-3***M3*04*-*****-40050E*5	H4 (CE 50°)	M3	4.2	1.4	217	337
ZX064-3***M4*04*-*****-40050E*5		M4	3.9	1.3		
ZX064-3***M5*04*-*****-40050E*5		M5	3.5	1.2		
ZX064-3***M6*04*-*****-40050E*5		M6	3.2	1.1		
ZX064-3***M7*04*-*****-40050E*5		M7	2.8	0.9		
ZX064-3***M3*05*-*****-40050E*4	H5 (CE 40°)	M3	7.7	2.6	258	434
ZX064-3***M4*05*-*****-40050E*4		M4	7.1	2.4		
ZX064-3***M5*05*-*****-40050E*4		M5	6.5	2.2		
ZX064-3***M6*05*-*****-40050E*4		M6	5.8	1.9		
ZX064-3***M7*05*-*****-40050E*4		M7	5.2	1.7		
ZX064-3***M3*05*-*****-40050E*5	H5 (CE 50°)	M3	7.0	2.3	258	434
ZX064-3***M4*05*-*****-40050E*5		M4	6.4	2.1		
ZX064-3***M5*05*-*****-40050E*5		M5	5.8	1.9		
ZX064-3***M6*05*-*****-40050E*5		M6	5.2	1.7		
ZX064-3***M7*05*-*****-40050E*5		M7	4.6	1.5		

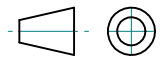
ZX MODEL CODE BREAKDOWN

	HOIST CODE							CRAB CODE			SUPPLY CODE											
	ZX06	4	-	3	**	*	**	*	**	*	-	CRB	09	B	2	-	400	50	E	*	4	
HOIST TYPE																						
NUMBER OF FALLS																						
HOIST MOTOR SPEED																						
GEARBOX																						
BARREL LENGTH																						
DUTY																						
SAFE WORKING LOAD																						
HOIST MOTOR REF																						
BRAKE SIZE																						
HOIST CONSTRUCTION																						
CRAB GAUGE #																						
CRAB RAIL SIZE ##																						
TRAVERSE MOTOR SPEED																						
OPERATING VOLTAGE (V)																						
FREQUENCY (Hz)																						
CERTIFICATION																						
CONTROL VOLTAGE																						
TEMPERATURE																						

C	BLOCK OPERATED ULTIMATE LIMIT OPTION ADDED, WORD 'INVERTER' IN NOTE CHANGED TO 'CONTACTOR CONTROL' ON SHT 3. WHEEL LOAD TABLE UPDATED. REF ECO-00260	SAJID	05/03/2009	Street Crane Co. Ltd				TITLE	CONTRACT No.				
B	WHEEL LOADS & SELF MASS ADDED, SHEET3 ADDED, NEW ROPE POSITION SHOWN. REF ECO-00152	BPC	09/06/2008	DATE	DRAWN	CHECKED	SCALE	ZX064 PARALLEL CRAB HOIST CE DATA SHEET NORMAL, LONG AND EXTRA LONG BARREL		PART No.	DZX-1019		
REV	DESCRIPTION	BY	DATE	10/04/2008	SW	CR	NTS	DRAWING No.	3	DZX-1019	C	SHT 2 OF 3	

INFRINGEMENT OF COPYRIGHT. THIS DRAWING IS THE PROPERTY OF STREET CRANE COMPANY LTD AND MUST NOT BE COPIED OR SHOWN TO THIRD PARTIES WITHOUT THE WRITTEN PERMISSION OF STREET CRANE CO LTD, CHAPEL-EN-LE-FRITH, HIGH PEAK, SK23 0PH. U.K. T: +44 (0)1298 812456 F: +44 (0)1298 814945

ALL DIMENSIONS IN MILLIMETRES



ROTARY ULTIMATE LIMIT ③

50°C AMBIENT ⑧

⑩ OUTDOOR HOIST BRAKE

COLLECTOR BRACKET (MIR) ②

⑪ BLOCK OPERATED ULTIMATE LIMIT

⑨ INVERTER CROSS TRAVEL

① COLLECTOR BRACKET (STD)

TRAVERSE LIMIT ④ OR
⑤ OR
⑥

NOTE: AS STANDARD ALL HOISTS ARE 2 SPEED CONTACTOR CONTROL CROSS TRAVEL, 40°C AMBIENT & INDOOR HOIST BRAKE.

REFERENCE	ADDITIONAL OPTIONS	AVAILABILITY
1	COLLECTOR BRACKET ASSEMBLY (STD)	YES
2	COLLECTOR BRACKET ASSEMBLY (MIR)	YES
3	ROTARY ULTIMATE LIMIT ASSEMBLY	YES
4	TRAVERSE LIMIT (RIGHT LEFT STOP)	YES
5	TRAVERSE LIMIT (RIGHT LEFT SLOWDOWN)	YES
6	TRAVERSE LIMIT (RIGHT LEFT STOP & SLOWDOWN)	YES
7	WIRE TRIP ULTIMATE LIMIT ASSEMBLY	NO
8	50°C AMBIENT	YES
9	INVERTER CROSS TRAVEL	YES
10	OUTDOOR HOIST BRAKE	YES
11	BLOCK OPERATED ULTIMATE LIMIT	YES

C	BLOCK OPERATED ULTIMATE LIMIT OPTION ADDED, WORD 'INVERTER' IN NOTE CHANGED TO 'CONTACTOR CONTROL' ON SHT 3. WHEEL LOAD TABLE UPDATED. REF ECO-00260	SAJID	05/03/2009	Street Crane Co. Ltd				TITLE	CONTRACT No.			
	WHEEL LOADS & SELF MASS ADDED, SHEET3 ADDED, NEW ROPE POSITION SHOWN. REF ECO-00152	BPC	09/06/2008	DATE	DRAWN	CHECKED	SCALE	ZX064 PARALLEL CRAB HOIST CE DATA SHEET HOIST OPTIONS	PART No.	DZX-1019		
REV	DESCRIPTION	BY	DATE	10/04/2008	SW	CR	NTS	DRAWING No.	3	DZX-1019	C	SHT 3 OF 3

INFRINGEMENT OF COPYRIGHT. THIS DRAWING IS THE PROPERTY OF STREET CRANE COMPANY LTD AND MUST NOT BE COPIED OR SHOWN TO THIRD PARTIES WITHOUT THE WRITTEN PERMISSION OF STREET CRANE CO LTD, CHAPEL-EN-LE-FRITH, HIGH PEAK, SK23 0PH. U.K. T: +44 (0)1298 812456 F: +44 (0)1298 814945