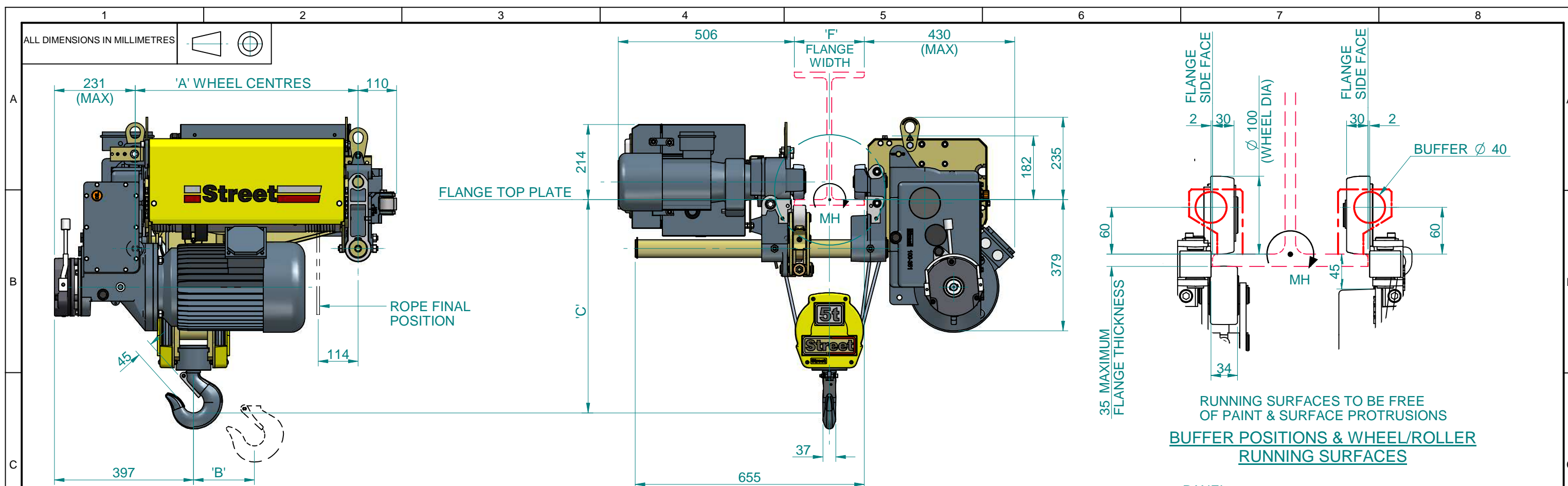
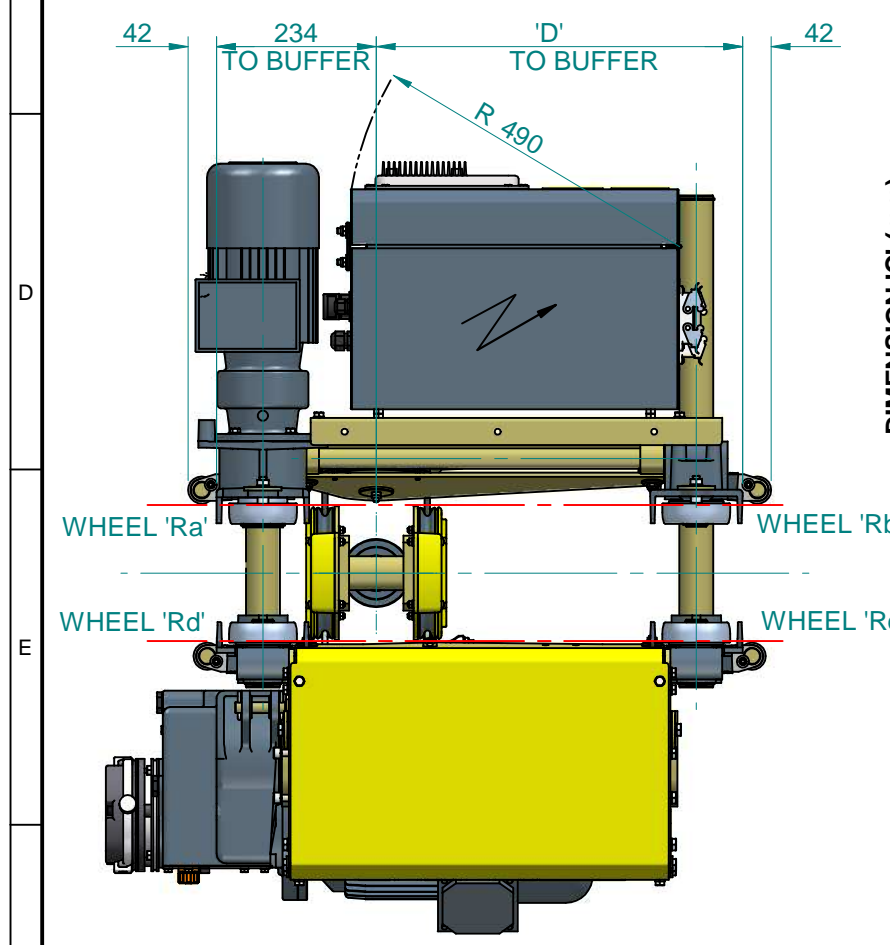


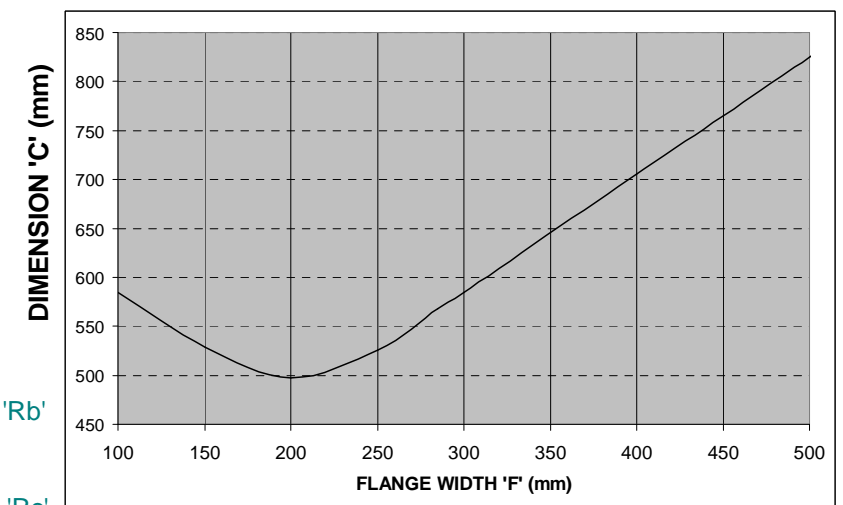
ALL DIMENSIONS IN MILLIMETRES



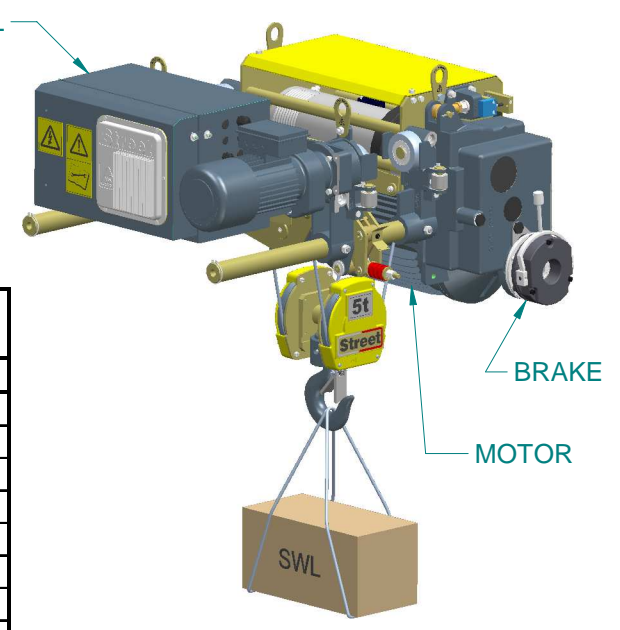
RUNNING SURFACES TO BE FREE OF PAINT & SURFACE PROTRUSIONS
BUFFER POSITIONS & WHEEL/ROLLER RUNNING SURFACES



ZX064 DIMENSION 'C'



FLANGE WIDTH 'F' in mm	'C' DIMENSION in mm	Hoist Reaction Roller Induced Moment (MH) in Nm		
		NB	LB	ELB
100	585	220	242	310
150	529	228	252	322
200	498	249	275	352
250	526	270	298	382
285	568	285	315	403
300	585	291	322	412
400	706	312	345	442
500	825	376	415	531

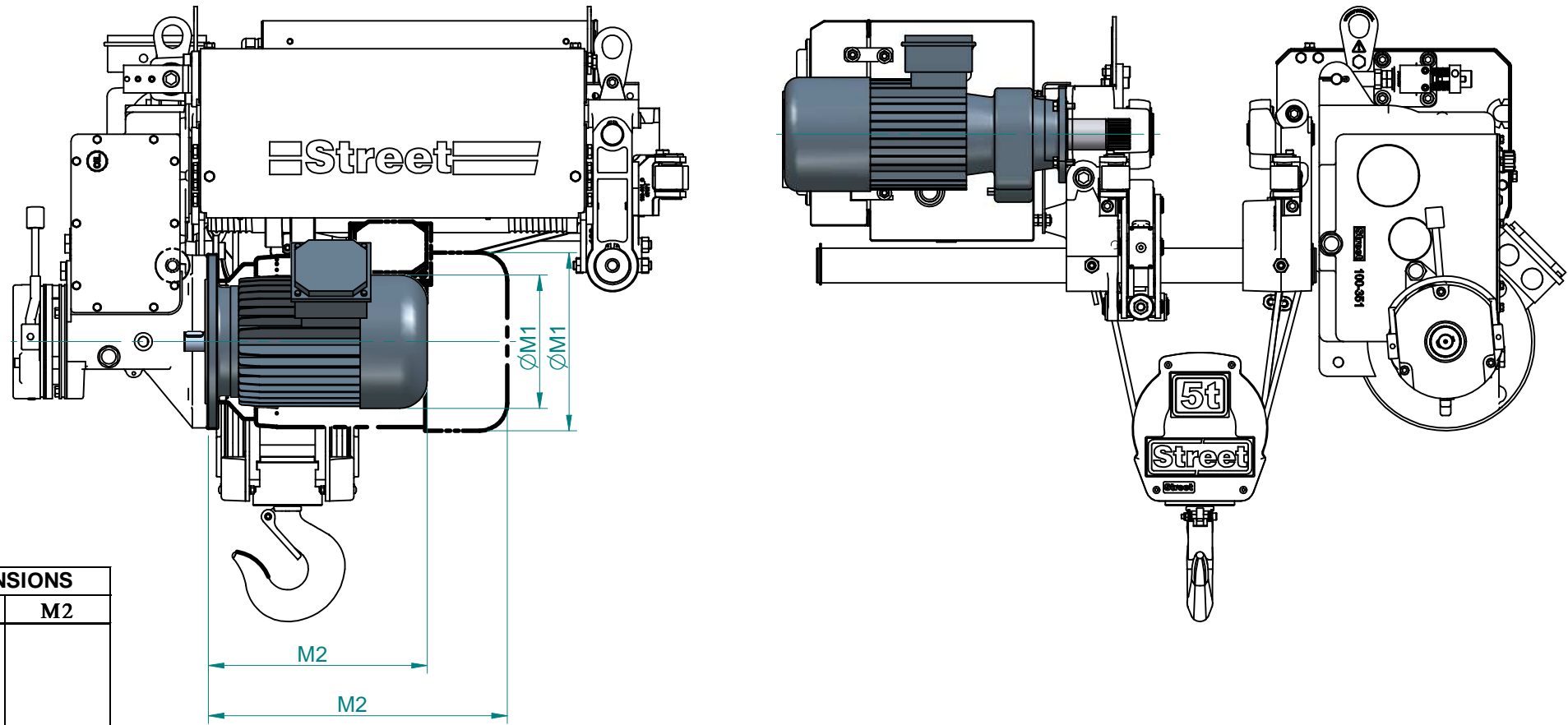
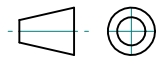


HOIST MODEL	HEIGHT OF LIFT (m)	* WHEEL LOAD in kg (WORST CASE LOAD AT TOP LIMIT) = FACTOR * SWL (in kg) + VALUE IN ()				SWL POSITION FOR MAX. WHEEL LOAD	SELF MASS (kg)	DIMENSIONS (mm)		
		Ra	Rb	Rc	Rd			A	B	D
ZX064-***N	6.5	0.37 * SWL + (118)	0.14 * SWL + (58)	0.14 * SWL + (58)	0.37 * SWL + (118)	TOP	350	637	106	538
ZX064-***L	10	0.41 * SWL + (122)	0.1 * SWL + (60)	0.1 * SWL + (60)	0.41 * SWL + (122)	TOP	386	867	163	768
ZX064-***E	15	0.44 * SWL + (146)	0.07 * SWL + (75)	0.07 * SWL + (75)	0.44 * SWL + (146)	TOP	439	1212	245	1113

REV	C	BLOCK OPERATED ULTIMATE LIMIT OPTION ADDED, WORD 'INVERTER' IN NOTE CHANGED TO 'CONTACTOR CONTROL' ON SHT 3. WHEEL LOAD TABLE UPDATED. REF ECO-00260	SAJID	05/03/2009	Street Crane Co. Ltd				TITLE	CONTRACT No.	
	B	SHEET 3 ADDED, NEW ROPE POSITION SHOWN, MASS RE-CALCULATED REF ECO-00152	BPC	09/06/2008	DATE	DRAWN	CHECKED	SCALE	ZX064 LOW HEAD CE DATA SHEET NORMAL, LONG AND EXTRA LONG BARREL	PART No.	DZX-1002
		DESCRIPTION	BY	DATE	25/03/2008	bhushan	CR	NTS		DRAWING No.	3 DZX-1002 C SHT 1 OF 3

INFRINGEMENT OF COPYRIGHT. THIS DRAWING IS THE PROPERTY OF STREET CRANE COMPANY LTD AND MUST NOT BE COPIED OR SHOWN TO THIRD PARTIES WITHOUT THE WRITTEN PERMISSION OF STREET CRANE CO LTD, CHAPEL-EN-LE-FRITH, HIGH PEAK, SK23 0PH. U.K. T : +44 (0)1298 812456 F : +44 (0)1298 814945

ALL DIMENSIONS IN MILLIMETRES



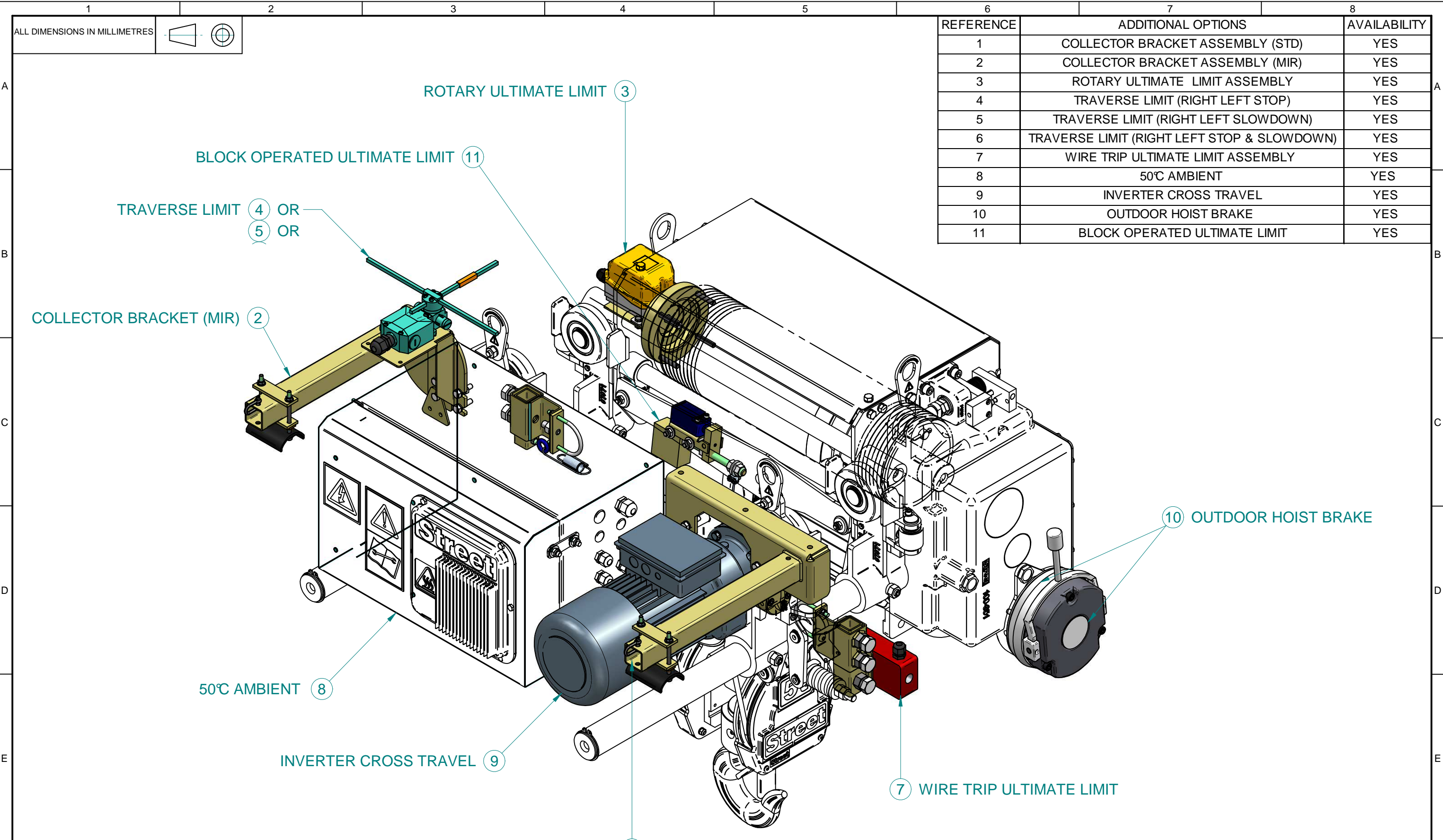
HOIST CODE	PRICE LIST MOTOR REF	DUTY	POWER kW		DIMENSIONS		
			FAST	SLOW	ØM1	M2	
ZX064-3***M3*03*-*****-40050E*4	H3 (CE 40°)	M3	3.7	1.2	193	318	
ZX064-3***M4*03*-*****-40050E*4		M4	3.4	1.1			
ZX064-3***M5*03*-*****-40050E*4		M5	3.1	1.0			
ZX064-3***M6*03*-*****-40050E*4		M6	2.8	0.9			
ZX064-3***M7*03*-*****-40050E*4		M7	2.5	0.8			
ZX064-3***M3*03*-*****-40050E*5		H3 (CE 50°)	M3	3.3			1.1
ZX064-3***M4*03*-*****-40050E*5			M4	3.1			1.0
ZX064-3***M5*03*-*****-40050E*5	M5		2.8	0.9			
ZX064-3***M6*03*-*****-40050E*5	M6		2.5	0.8			
ZX064-3***M7*03*-*****-40050E*5	M7	2.2	0.7				
ZX064-3***M3*04*-*****-40050E*4	H4 (CE 40°)	M3	4.7	1.6	217	337	
ZX064-3***M4*04*-*****-40050E*4		M4	4.3	1.4			
ZX064-3***M5*04*-*****-40050E*4		M5	3.9	1.3			
ZX064-3***M6*04*-*****-40050E*4		M6	3.5	1.2			
ZX064-3***M7*04*-*****-40050E*4	M7	3.1	1.0				
ZX064-3***M3*04*-*****-40050E*5	H4 (CE 50°)	M3	4.2	1.4			
ZX064-3***M4*04*-*****-40050E*5		M4	3.9	1.3			
ZX064-3***M5*04*-*****-40050E*5		M5	3.5	1.2			
ZX064-3***M6*04*-*****-40050E*5		M6	3.2	1.1			
ZX064-3***M7*04*-*****-40050E*5	M7	2.8	0.9				
ZX064-3***M3*05*-*****-40050E*4	H5 (CE 40°)	M3	7.7	2.6	258	434	
ZX064-3***M4*05*-*****-40050E*4		M4	7.1	2.4			
ZX064-3***M5*05*-*****-40050E*4		M5	6.5	2.2			
ZX064-3***M6*05*-*****-40050E*4		M6	5.8	1.9			
ZX064-3***M7*05*-*****-40050E*4	M7	5.2	1.7				
ZX064-3***M3*05*-*****-40050E*5	H5 (CE 50°)	M3	7.0	2.3			
ZX064-3***M4*05*-*****-40050E*5		M4	6.4	2.1			
ZX064-3***M5*05*-*****-40050E*5		M5	5.8	1.9			
ZX064-3***M6*05*-*****-40050E*5		M6	5.2	1.7			
ZX064-3***M7*05*-*****-40050E*5	M7	4.6	1.5				

ZX MODEL CODE BREAKDOWN

	HOIST CODE							CRAB CODE			SUPPLY CODE									
	ZX06	4	-	3	**	*	**	*	-	LHR	00	0	2	-	400	50	E	*	4	
HOIST TYPE																				
NUMBER OF FALLS																				
HOIST MOTOR SPEED																				
GEARBOX																				
BARREL LENGTH																				
DUTY																				
SAFE WORKING LOAD																				
HOIST MOTOR REF																				
BRAKE SIZE																				
HOIST CONSTRUCTION																				
CRAB GAUGE																				
CRAB RAIL SIZE																				
TRAVERSE MOTOR SPEED																				
OPERATING VOLTAGE (V)																				
FREQUENCY (Hz)																				
CERTIFICATION																				
CONTROL VOLTAGE																				
TEMPERATURE																				

REV	C	BLOCK OPERATED ULTIMATE LIMIT OPTION ADDED, WORD 'INVERTER' IN NOTE CHANGED TO 'CONTACTOR CONTROL' ON SHT 3. WHEEL LOAD TABLE UPDATED. REF ECO-00260	SAJID	05/03/2009	Street Crane Co. Ltd				TITLE	CONTRACT No.	
	B	SHEET 3 ADDED, NEW ROPE POSITION SHOWN, MASS RE-CALCULATED REF ECO-00152	BPC	09/06/2008	DATE	DRAWN	CHECKED	SCALE	PART No. DZX-1002		
		DESCRIPTION	BY	DATE	25/03/2008	bhushan	CR	NTS	DRAWING No. 3	DZX-1002	C

INFRINGEMENT OF COPYRIGHT. THIS DRAWING IS THE PROPERTY OF STREET CRANE COMPANY LTD AND MUST NOT BE COPIED OR SHOWN TO THIRD PARTIES WITHOUT THE WRITTEN PERMISSION OF STREET CRANE CO LTD, CHAPEL-EN-LE-FRITH, HIGH PEAK, SK23 0PH. U.K. T: +44 (0)1298 812456 F: +44 (0)1298 814945



REFERENCE	ADDITIONAL OPTIONS	AVAILABILITY
1	COLLECTOR BRACKET ASSEMBLY (STD)	YES
2	COLLECTOR BRACKET ASSEMBLY (MIR)	YES
3	ROTARY ULTIMATE LIMIT ASSEMBLY	YES
4	TRAVERSE LIMIT (RIGHT LEFT STOP)	YES
5	TRAVERSE LIMIT (RIGHT LEFT SLOWDOWN)	YES
6	TRAVERSE LIMIT (RIGHT LEFT STOP & SLOWDOWN)	YES
7	WIRE TRIP ULTIMATE LIMIT ASSEMBLY	YES
8	50°C AMBIENT	YES
9	INVERTER CROSS TRAVEL	YES
10	OUTDOOR HOIST BRAKE	YES
11	BLOCK OPERATED ULTIMATE LIMIT	YES

NOTE: AS STANDARD ALL HOISTS ARE 2 SPEED CONTACTOR CONTROL CROSS TRAVEL, 40°C AMBIENT & INDOOR HOIST BRAKE.

REV	C	BLOCK OPERATED ULTIMATE LIMIT OPTION ADDED, WORD 'INVERTER' IN NOTE CHANGED TO 'CONTACTOR CONTROL' ON SHT 3. WHEEL LOAD TABLE UPDATED. REF ECO-00260	SAJID	05/03/2009	Street Crane Co. Ltd			TITLE	CONTRACT No.			
	B	SHEET 3 ADDED, NEW ROPE POSITION SHOWN, MASS RE-CALCULATED REF ECO-00152	BPC	09/06/2008	DATE	DRAWN	CHECKED	SCALE	PART No.	DZX-1002		
		DESCRIPTION	BY	DATE	25/03/2008	bhushan	CR	NTS	DRAWING No.	3	DZX-1002	C

INFRINGEMENT OF COPYRIGHT. THIS DRAWING IS THE PROPERTY OF STREET CRANE COMPANY LTD AND MUST NOT BE COPIED OR SHOWN TO THIRD PARTIES WITHOUT THE WRITTEN PERMISSION OF STREET CRANE CO LTD, CHAPEL-EN-LE-FRITH, HIGH PEAK, SK23 0PH. U.K . T : +44 (0)1298 812456 F : +44 (0)1298 814945